

Discovery Utility Setup Guide

Document Part #931791A

CyberData Corporation
3 Justin Court
Monterey, CA 93940
(831) 373-2601

Document #931791A

COPYRIGHT NOTICE:

© 2020, CyberData Corporation, ALL RIGHTS RESERVED.

This configuration guide and related materials are the copyrighted property of CyberData Corporation. No part of this configuration guide or related materials may be reproduced or transmitted, in any form or by any means (except for internal use by licensed customers), without prior express written permission of CyberData Corporation. This configuration guide, and the products, software, firmware, and/or hardware described in this configuration guide are the property of CyberData Corporation, provided under the terms of an agreement between CyberData Corporation and recipient of this configuration guide, and their use is subject to that agreement and its terms.

DISCLAIMER: Except as expressly and specifically stated in a written agreement executed by CyberData Corporation, CyberData Corporation makes no representation or warranty, express or implied, including any warranty or merchantability or fitness for any purpose, with respect to this configuration guide or the products, software, firmware, and/or hardware described herein, and CyberData Corporation assumes no liability for damages or claims resulting from any use of this configuration guide or such products, software, firmware, and/or hardware. CyberData Corporation reserves the right to make changes, without notice, to this configuration guide and to any such product, software, firmware, and/or hardware.

OPEN SOURCE STATEMENT: Certain software components included in CyberData products are subject to the GNU General Public License (GPL) and Lesser GNU General Public License (LGPL) “open source” or “free software” licenses. Some of this Open Source Software may be owned by third parties. Open Source Software is not subject to the terms and conditions of the CyberData COPYRIGHT NOTICE or software licenses. Your right to copy, modify, and distribute any Open Source Software is determined by the terms of the GPL, LGPL, or third party, according to who licenses that software. Software or firmware developed by CyberData that is unrelated to Open Source Software is copyrighted by CyberData, subject to the terms of CyberData licenses, and may not be copied, modified, reverse-engineered, or otherwise altered without explicit written permission from CyberData Corporation.

TRADEMARK NOTICE: CyberData Corporation and the CyberData Corporation logos are trademarks of CyberData Corporation. Other product names, trademarks, and service marks may be the trademarks or registered trademarks of their respective owners.

Revision Information

Initial release of 931791A on 8/12/2020.

Table of Contents

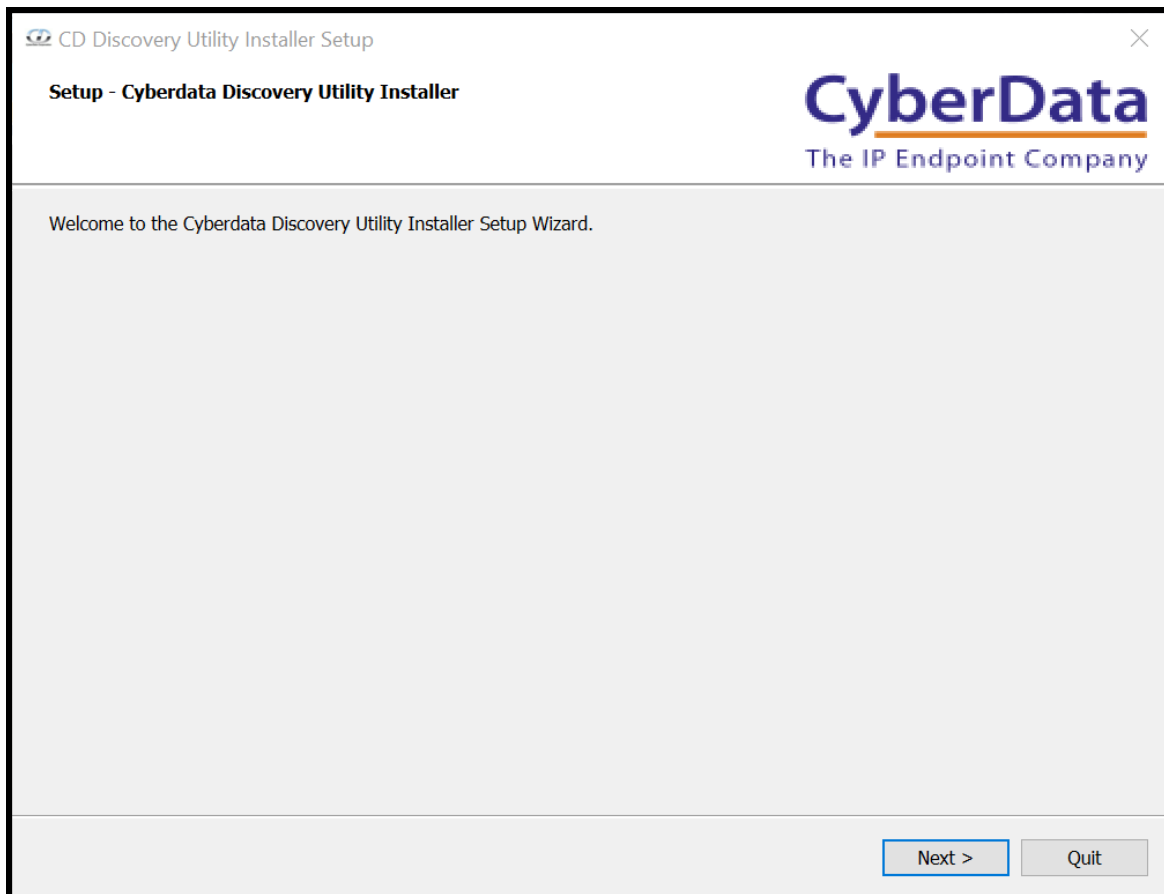
<i>Discovery Utility Setup Guide</i>	0
Document Part #.....	0
Table of Contents.....	3
1.0 Installation	4
2.0 Starting and Using the Discovery Utility	11
3.0 Contact CyberData Corporation.....	13

1.0 Installation

This section will walk through the setup process of the Discovery Utility.

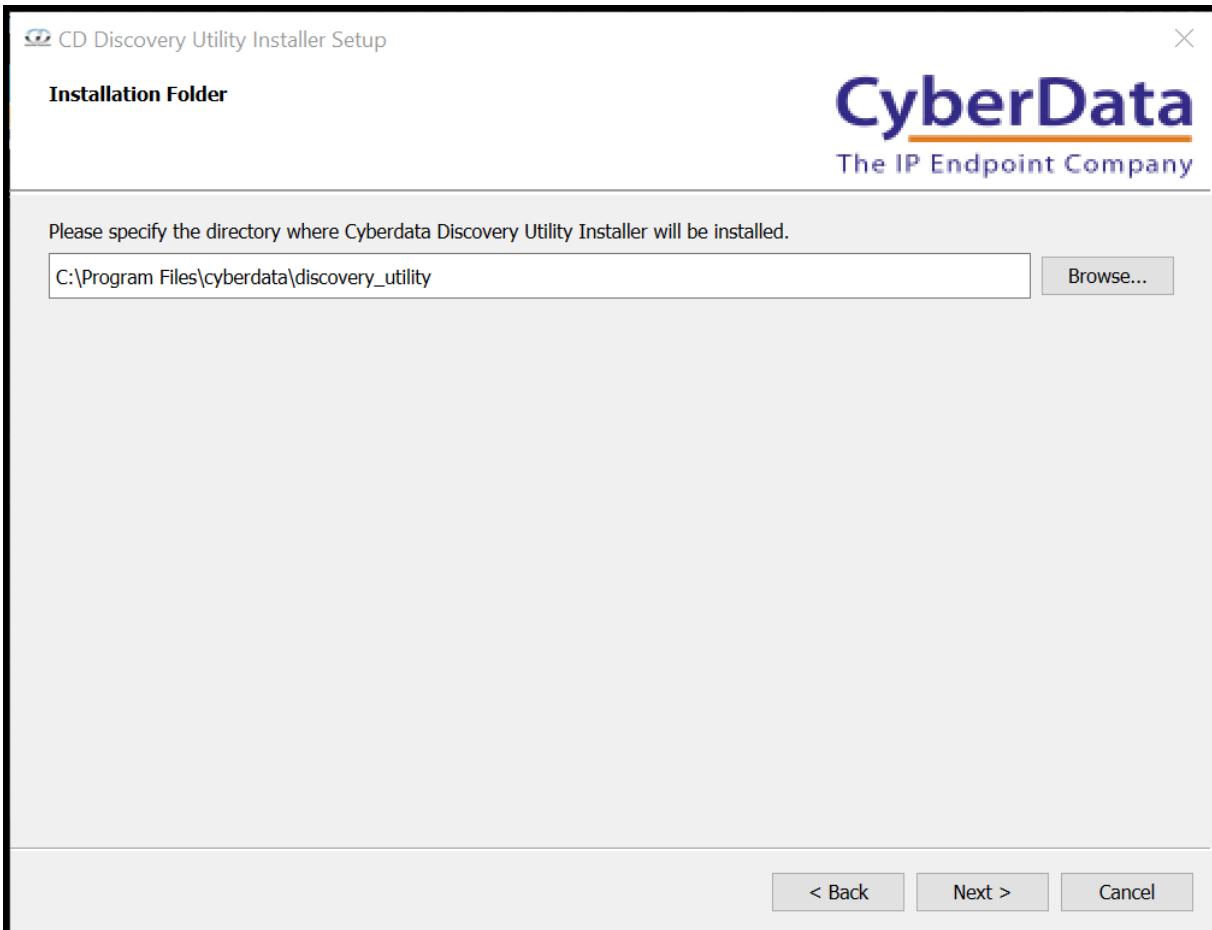
1. Double click on the cd_discovery_installer.exe file.
2. An installer window will open, press next to continue

Figure 1-1. Discovery Utility Install Setup



3. Press Browse to pick a different installation location or press next to continue with the default location

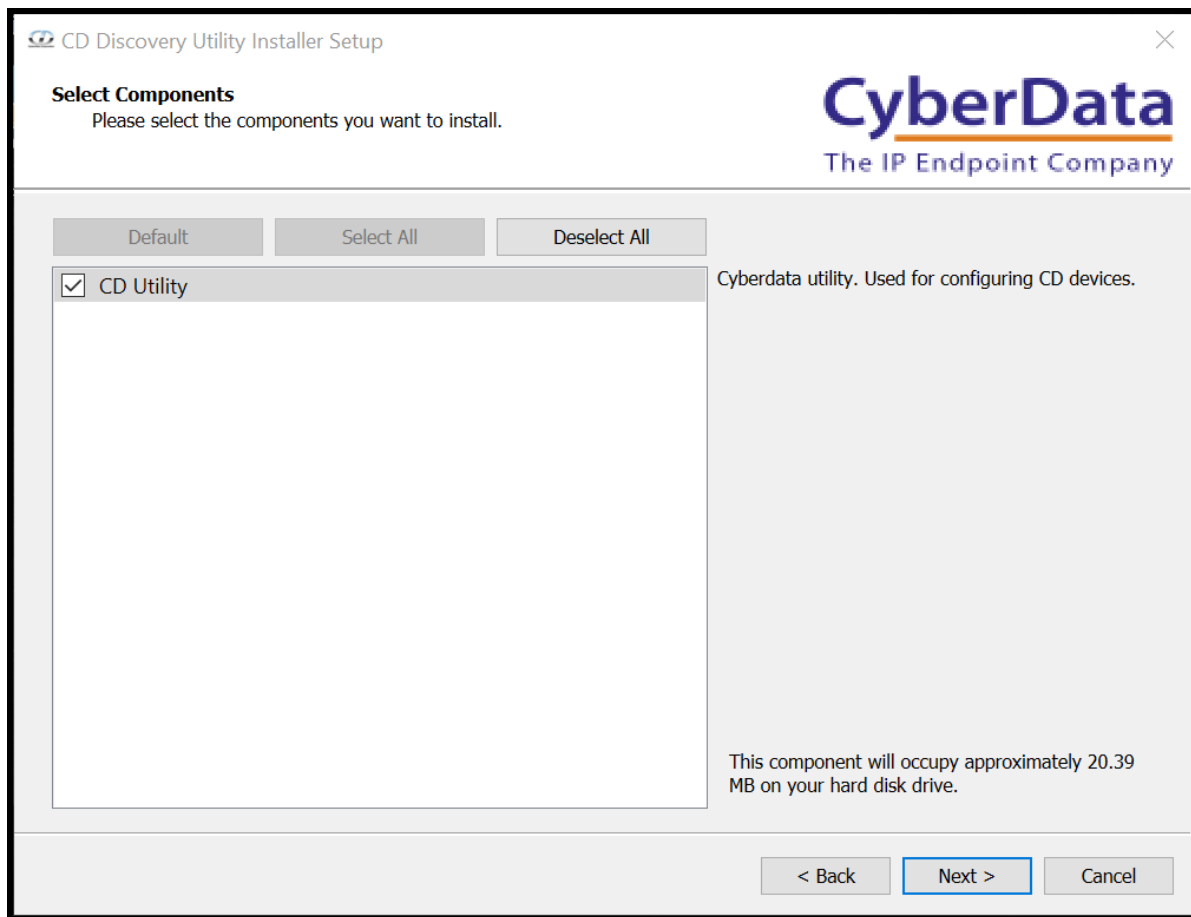
Figure 1-2. Select Installation Location



The screenshot shows a Windows-style installer window titled "CD Discovery Utility Installer Setup". In the top right corner is a close button (X). The window has a header area with the "CyberData" logo and the tagline "The IP Endpoint Company". Below the header, the section is titled "Installation Folder". A text box contains the default path: "C:\Program Files\cyberdata\discovery_utility". To the right of the text box is a "Browse..." button. Below the text box is a large, empty light-gray area. At the bottom of the window are three buttons: "< Back", "Next >", and "Cancel".

4. Select components to be installed.

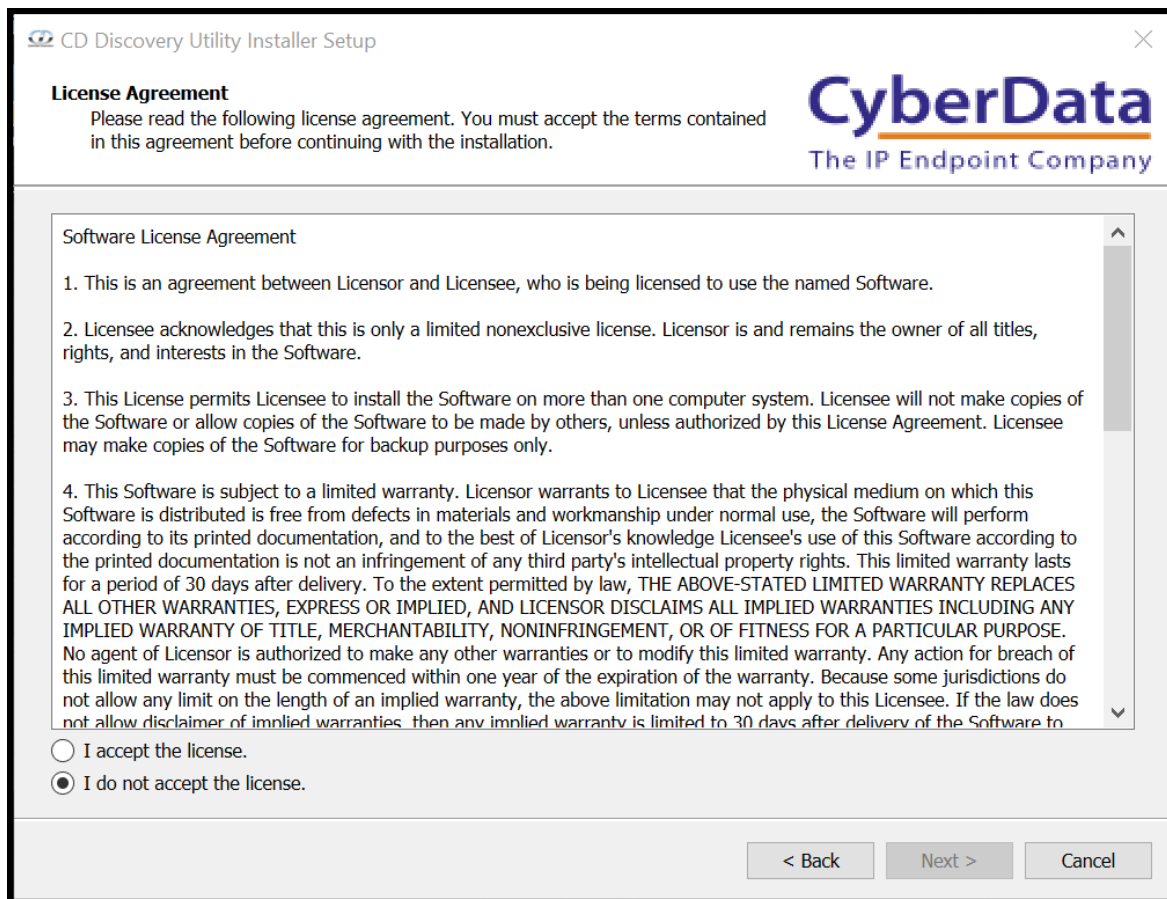
Figure 1-3. Select Components



5. Press **Next** to continue.

6. **Read and Accept** the License agreement.

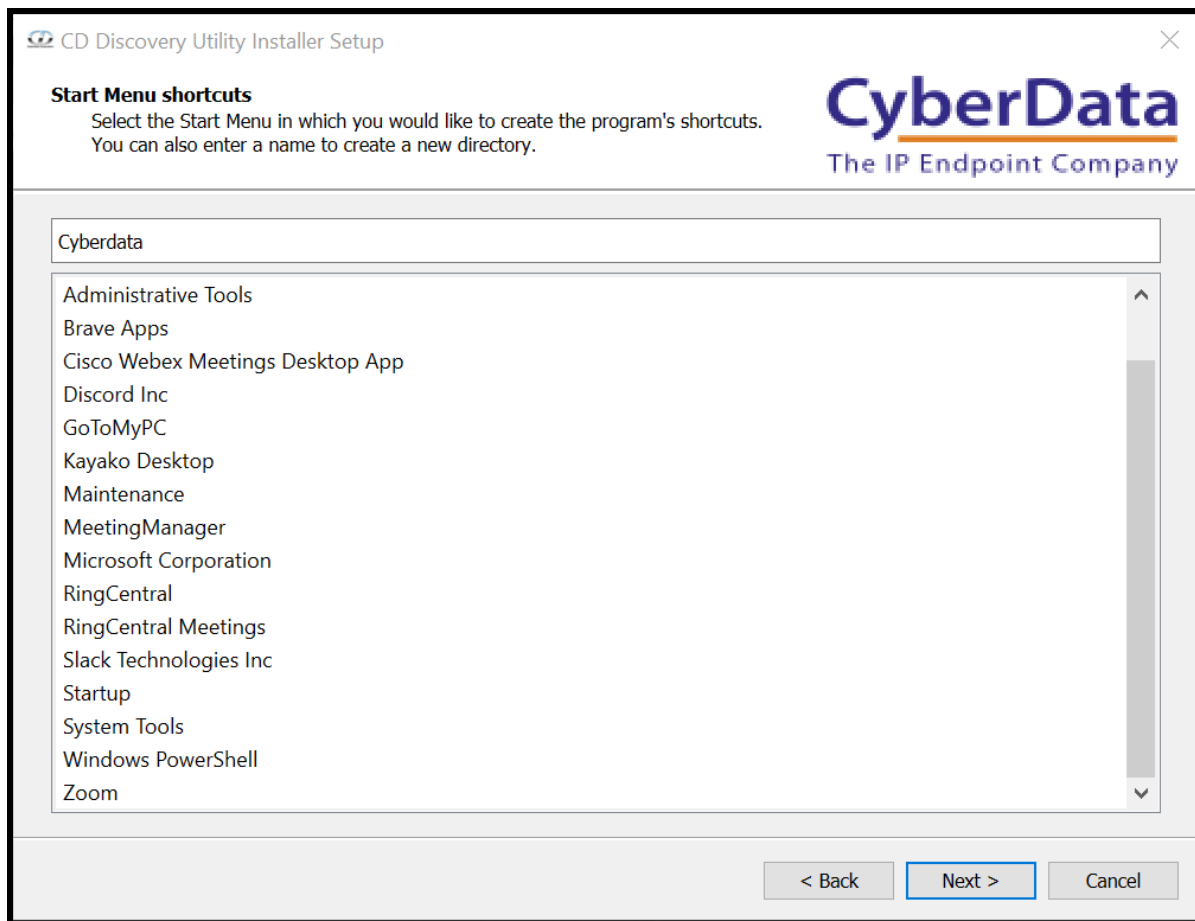
Figure 1-4. License Agreement



7. Press **Next**.

8. Select a Start Menu shortcut or create a new shortcut.

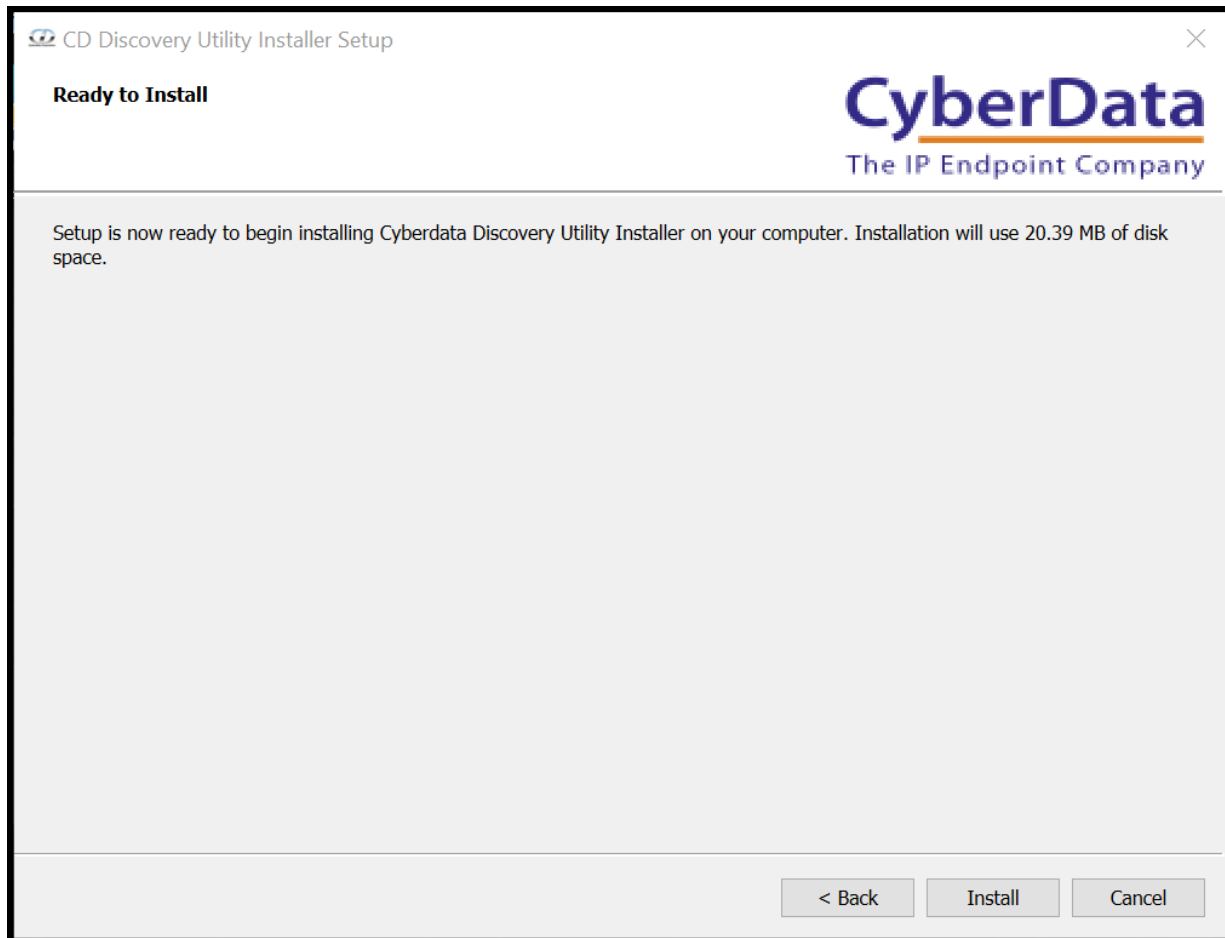
Figure 1-5. Start Menu Shortcut



9. Press **Next** to continue.

10. The tool is ready to be installed, press **Install**.

Figure 1-6. Ready to Install



11. Agree to allow the program to make changes to the machine.

12. Click **Finish** to exit installation wizard.

Figure 1-7. Installation Complete



2.0 Starting and Using the Discovery Utility

This section explains how to start the tool and explains its features.

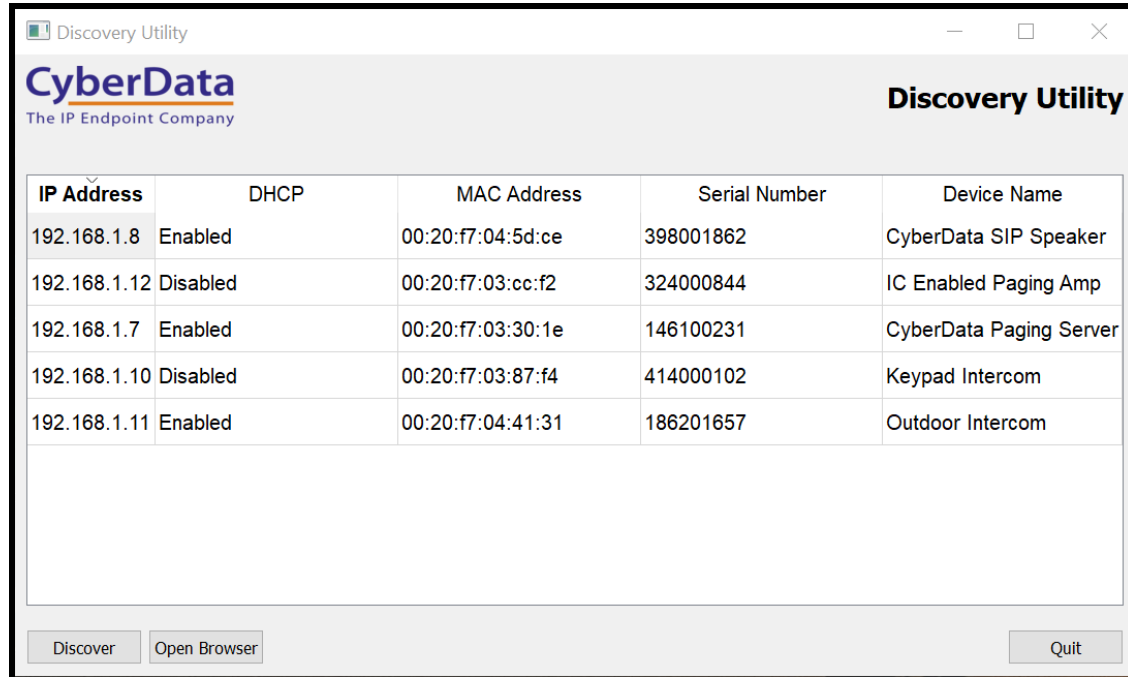
1. Start the tool by double clicking on the Discovery Utility shortcut on the desktop

Figure 2-1. Discovery Utility Desktop Icon



2. When the tool is opened it will automatically scan the network to detect any CyberData devices on the local network. Once detected the devices will be shown in the tool.

Figure 2-2. Discovery Utility Window



3. The tool displays following columns for information on the devices:
 - IP Address
 - DHCP Setting - (Enabled or Disabled)
 - MAC Address
 - Serial Number
 - Device Name
4. Press the Open Browser button to launch a browser to configure the device.

3.0 Contact CyberData Corporation

Sales

For sales-related questions, please visit our [Contact CyberData Sales](#) web page for more information.

Technical Support

For Technical Support, please submit a ticket through our helpdesk at support.cyberdata.net.

Documentation Feedback

We realize changes to the software or hardware of the RingCentral Cloud PBX solution may render this document obsolete. We welcome and encourage documentation feedback to ensure continued applicability.